



گھر
Homes
Establishing peace

Lets begin with a smile.



Bhabani Construction is a partnership firm which is actively engaged in the trade of Real Estate in the state of Odisha. The Company has carved out a niche for itself as a bonafide builder/developer. The firm has already formulated and executed several institutional and housing development schemes in close proximity of the Capital City and has translated into reality the dream of purchasers to own plots. The firm in its quest to provide self-contained flats/apartments, independent houses, satellite townships has made an integrated planning with emphasis on quality Construction.



Specification



STRUCTURE

RCC framed structure with Fly ash / Concrete brick wall.

FLOORING/WALL TILE

Room - Vitrified Tiles

Kitchen - Vitrified Tiles

Toilet - Anti skid Ceramic Tiles

Common Area - Vitrified Tiles

DOOR AND WINDOW

Main door - Flush Door with lamination.

Inner door - Flush Door with enamel Paint

Door Frame - Sal Wood / Block board frame

Windows - Powder Coated Aluminium with glass & protected with MS grill.

Toilet - Water proof PVC Door.

KITCHEN

Cooking platform with marble top.

Stainless steel sink.

Designer tile up to 2 ft above the platform

Provision for exhaust fan

ELECTRICAL

Modular Electrical Switches.

All rooms provided with 2 light points, 1 Fan point and 1 plug point



Building under construction



TV point, Phone Point in Master bedroom and drawing Room.

Provision for internet

ELECTRICAL

Modular Electrical Switches.

All rooms provided with 2 light points, 1 Fan point and 1 plug point

TV point, Phone Point in Master bedroom and drawing Room.

Provision for internet

TOILET

CP fittings of any ISI Brand

Designer tiles on walls upto 7ft height

Provision of exhaust fan.

Provision for geyser.

WALL FINISH

Internal - distemper paint over plaster

External - Weather coat paint

OTHERS

Designer wash basin with mirror in dining area.

Water point and drainage point for washing machine.

FACILITIES

Lift facility

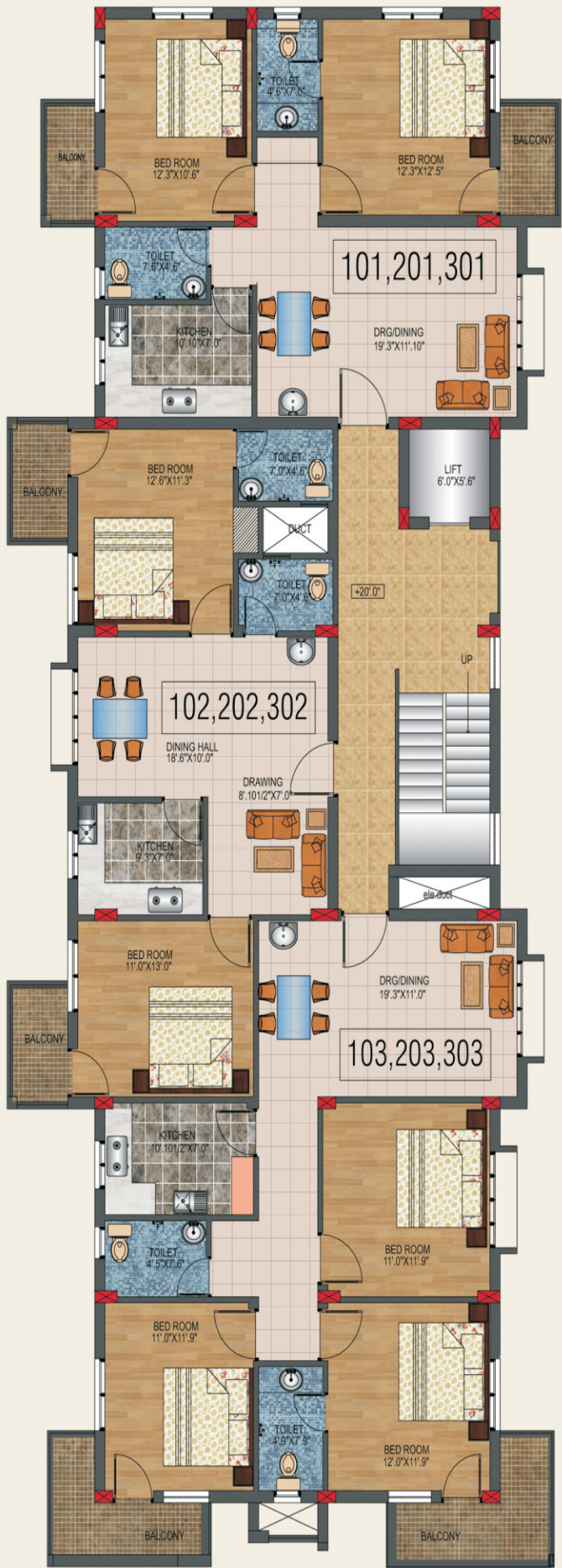
24 hrs security

Power backup to each flat

Cc tv surveillance

Vedio door phone





TYPICAL FLOOR PLAN



Area Statement		
Flat no	Type	Built up area
101	3 bhk	1153 sqft
102	2 bhk	1085 sqft
103	3 bhk	1466 sqft
201	3 bhk	1148 sqft
202	2 bhk	1086 sqft
203	2 bhk	1472 sqft
301	3 bhk	1148 sqft
302	2 bhk	1086 sqft
303	3 bhk	1464 sqft

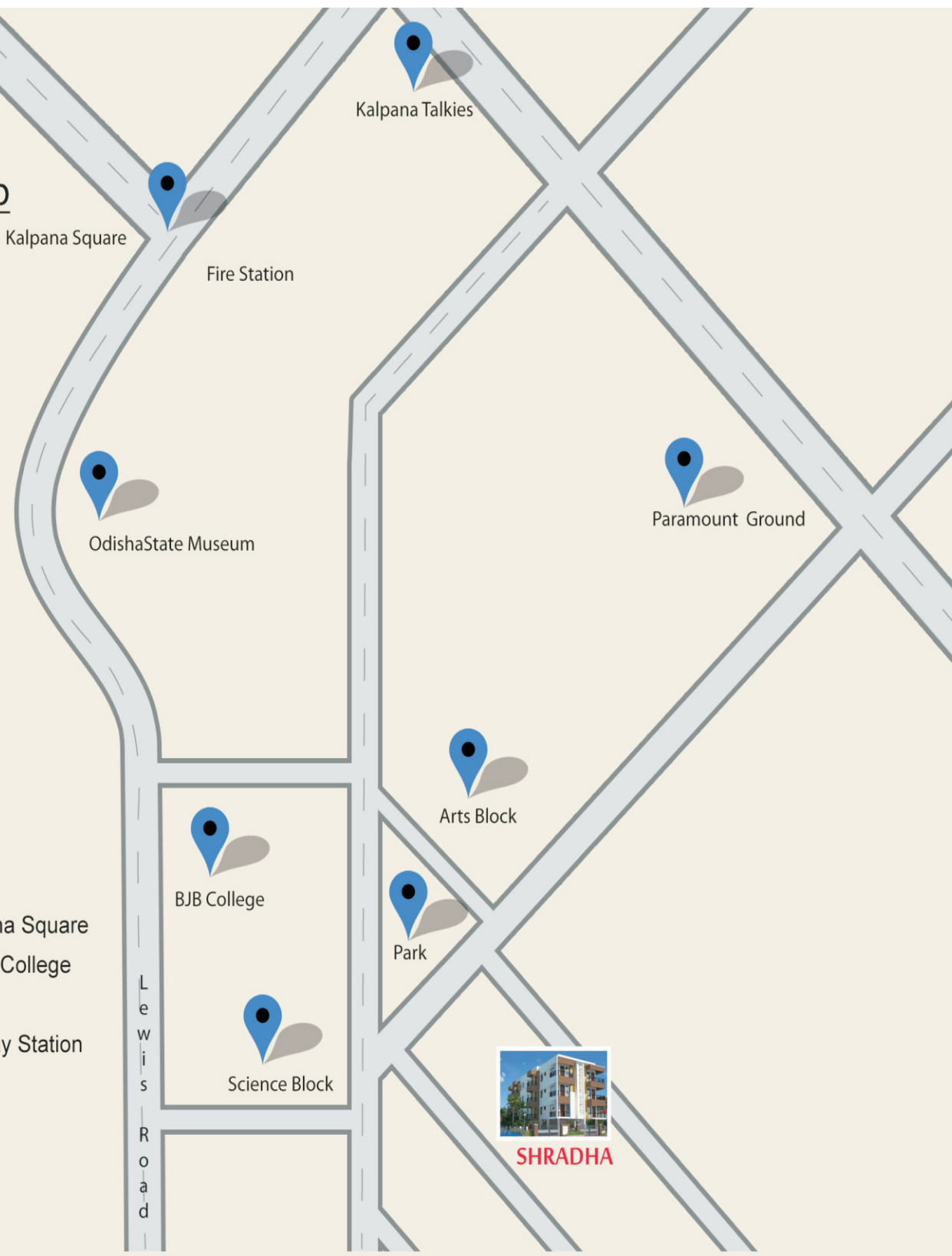
Payment Schedule

- Booking amount Rs. 5,00,000/-
- Within 30 days of booking including booking amount 20% of unit cost.
- On Completion of foundation 15%
- On Completion Of Stilt floor slab casting 10%
- On Completion of First floor slab casting 10%
- On Completion of Second floor slab casting 10%
- On completion of of Third floor slab casting 10%
- On completion of Brick work of the respective flat 10%
- On completion of Flooring work of the respective flat 10%
- On Possession 5%

Extra Charges

- Parking
- Electrification
- Society Charges
- Service tax as applicable
- Registration as applicable





Distance

- 1 Km from Kalpana Square
- 0.5 Km from BJB College
- 3 Km from Airport
- 3 Km from Railway Station

Developers:
M/S Baibhav Properties (p) ltd.
 123/123, Bhubaneswar, Bhubaneswar, bbsr
 Pin - 751002
 1234567890

For Booking:
contact no-1234567890

Consultant:
NOTION

The brochure is not a legal document. It has been produced for the general promotion of the development and for no other purpose. All information contained in this brochure is taken from design internet material and may be subject to further design development. These details do not form any part of any contract and whilst every effort has been made to ensure their accuracy. The intending purchasers are advised to have their self assessment before the transaction.